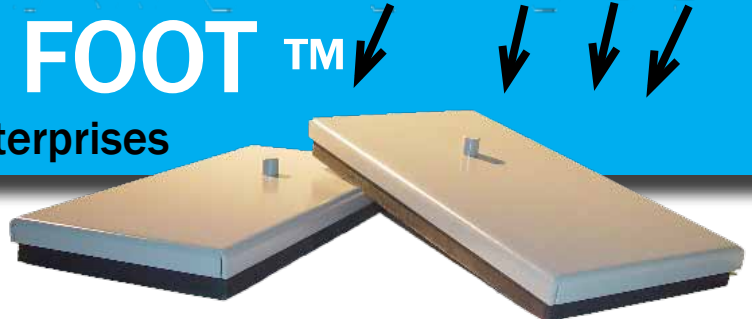


**MADE IN THE USA**

# The GENERATOR FOOT™

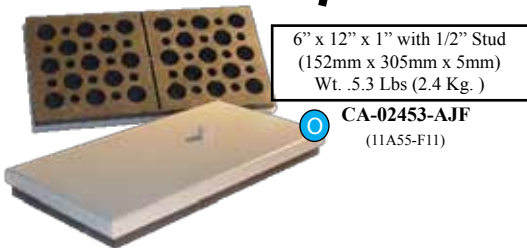
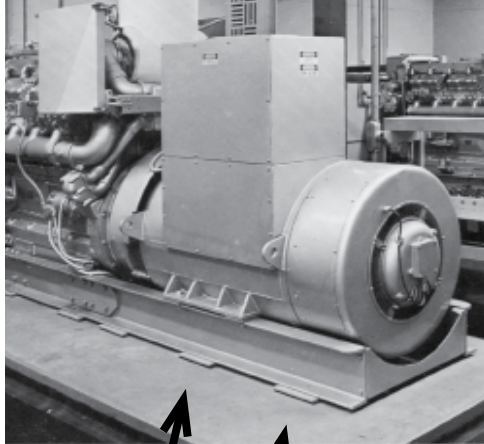
Equipment Mountings By Stiles Enterprises



The Generator Foot is a heavy duty anti-vibration mount originally designed by a large equipment dealer for isolating generator sets, compressors, and pump package units. When given the proper load per mount, Stiles's Generator Foot can reduce vibration by 80% and more. Priced approximately 1/2 to 2/3 of conventional spring mounts, most orders for the Generator Foot are shipped from stock. These mounts are currently in use under Caterpillar®, Cummins®, Detroit®, and other brands of equipment.

Key to the Generator Foot is Stiles's one inch thick vibration damping VIB PADS. Fitted over each pad is a heavy gage metal adaptor plate with a 1/2" (13mm) x 1/2" (13mm) high non-threaded stud. Installation consists of lifting

the equipment and locating the proper mount with the stud locking into the standard bolting holes on the equipment frame. For lighter equipment which may be moved frequently, the #H88 adaptor plate has a .41" (10.4mm) bolting hole replacing the stud. With this plate bolted to the frame, the matching pad can then be snapped into place.

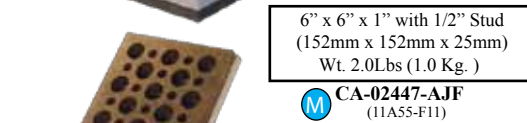


6" x 12" x 1" with 1/2" Stud  
(152mm x 305mm x 5mm)  
Wt. .5.3 Lbs (2.4 Kg.)  
**CA-02453-AJF**  
(11A55-F11)

6" x 10" x 1" with 1/2" Stud  
(152mm x 254 mm x 25mm)  
Wt. 3.6 Lbs (1.6 Kg.)



**CA-02450-AJF**  
(21A55-F11)



6" x 6" x 1" with 1/2" Stud  
(152mm x 152mm x 25mm)  
Wt. 2.0Lbs (1.0 Kg.)  
**CA-02447-AJF**  
(11A55-F11)

**6 Inch Wide Pads Are Stocked In Natural Rubber**  
**3.15 Inch Wide Pads Are Stocked In Neoprene**

Generator Foot Load Range Chart													
Old Number	GF 88B25-F88	GF 88B40-F88	GF 2-88B25-F0824	GF 2-88B40-F0824	GF 3-88B25-F0824	GF 3-88B40-F0824	GF 2-88B55-F0824	GF 12A55-F21	GF 3-88B55-F0824	GF 21A55-F21	GF 11A55-F11		
PICTURE	A	D	B	E	G	H	J	K	I	M	L	N	O
Part Number	CA-02438-AJC	CA-02438-AJD	CA-02441-AJC	CA-02441-AJD	CA-02444-AJC	CA-02444-AJD	CA-02441-AIW	CA-02447-AJF	CA-02444-AIW	CA-02450-AJF	CA-02450-AJF	CA-02453-AJF	CA-02453-AJF
R.P.M	Load Per Mount - Pounds (KGS.)												
1100	700 (318)	1100 (499)	1150 (522)	1400 (635)	2050 (930)	2950 (1338)	3450 (1565)	4750 (2155)	5000 (2268)	5850 (2654)	8800 (3992)		
1200	600 (272)	900 (408)	1000 (454)	1150 (522)	1750 (794)	2450 (1111)	2850 (1293)	3950 (1792)	4100 (1860)	4900 (2223)	7300 (3311)		
1300	500 (227)	800 (363)	750 (340)	1000 (454)	1400 (635)	2100 (953)	2450 (1111)	3400 (1543)	3600 (1633)	4200 (1905)	6350 (2880)		
1400	450 (204)	650 (295)	700 (318)	850 (386)	1250 (567)	1800 (817)	2100 (953)	2900 (1315)	3000 (1361)	3550 (1610)	5350 (2427)		
1500	400 (182)	600 (272)	600 (272)	750 (340)	1150 (522)	1600 (726)	1850 (839)	2550 (1157)	2650 (1202)	3150 (1429)	4700 (2132)		
1600	350 (159)	500 (227)	550 (250)	650 (295)	1000 (454)	1400 (635)	1650 (748)	2300 (1043)	2350 (1066)	2800 (1270)	4200 (1905)		
1700	300 (136)	450 (204)	500 (227)	550 (250)	900 (408)	1200 (544)	1400 (635)	1950 (885)	2000 (907)	2400 (1089)	3600 (1632)		
1800	275 (125)	400 (182)	450 (204)	500 (227)	800 (363)	1100 (499)	1250 (567)	1750 (794)	1800 (816)	2150 (975)	3200 (1452)		
1900	250 (113)	350 (159)	400 (181)	450 (204)	700 (318)	1000 (454)	1150 (522)	1600 (726)	1650 (748)	1950 (885)	2900 (1315)		
2000	200 (91)	300 (136)	350 (159)	400 (181)	650 (295)	900 (408)	1000 (454)	1400 (635)	1500 (680)	1750 (800)	2650 (1202)		

Test Data Compiled By Brewer Engineering Laboratories - 1978.

Weights Represent Optimum Load Per Mount At Approximately 80% Vibration Absorption Levels Given The R.P.M. Suggested loads are based on transmitted cycles per minute. R.P.M. is used for convenience when actual transmitted frequency is unknown. It is the responsibility of the customer to determine suitability of the mounts for the application.

Find Your RPM In The Left Column Of The Chart. Suggested Load Per Mount Equals Loads Listed To The Right Of The Listed RPM One Below Through Two Listed RPMs Above The Equipment's R.P.M. Example Shows Suggested Load Range For Each Mount At 1800 R.P.M.

3.15" x 9.45" x 1" with 1/2" Stud  
(80mm x 240mm x 25mm)  
Wt. 2.6 Lbs (1.2 Kg.)

- G** CA-02441-AJC (2-88B25-F0824)
- H** CA-02441-AJD (2-88B40-F0824)
- I** CA-02441-AIW (2-88B55-F0824)

3.15" x 3.15" x 1" with 1/2" Stud  
(80mm x 80mm x 25mm)  
Wt. .8 Lbs (.4 Kg.)

- A** CA-02438-AJC (88B25-F88)
- B** CA-02438-AJD (88B40-F88)

3.15" x 9.45" x 1" with 1/2" Stud  
(80mm x 240mm x 25mm)  
Wt. 2.6 Lbs (1.2 Kg.)

- J** CA-02444-AJC (3-88B25-F0824)
- K** CA-02444-AJD (3-88B40-F0824)
- L** CA-02444-AIW (3-88B55-F0824)

3.15" x 3.15" x 1" with .38" Hole  
(80mm x 80mm x 25mm)  
Wt. .8 Lbs (.4 Kg.)

- D** CA-02435-AJC (88B25-H88)
- E** CA-02435-AJD (88B40-H88)
- F** CA-02435-AIW (88B55-H88)



P.O. Box 92 • 114 Beach St.  
Rockaway • N.J. 07866

StilesEnterprises.com  
1-800-325-4232

info@StilesEnterprises.com  
Fax: 1-973-625-9346